



PACKAGING GUIDELINES

If you need to send us your Nintendo Product (along with any Nintendo accessories) back for inspection by the Customer Support Team, follow the instructions below to package your console safely for posting.



YOU'LL NEED:

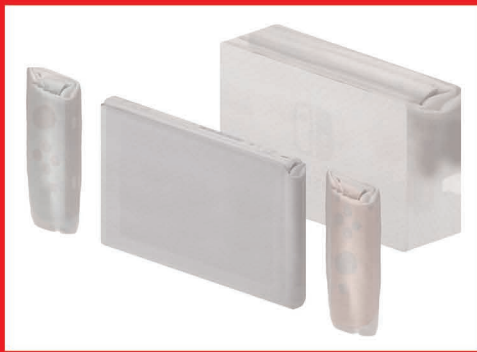
- A suitably sized box or the original packaging.
- A photocopy of your proof of purchase.
- Your full name, address details and phone number.
- Protective packaging, i.e Bubble wrap or newspaper.
- Scissors and tape.



STEP 1

Where possible, please backup all user data. Remove all games and SD cards from consoles before packing.

- Please only send Official Nintendo products.
- We only need you to send items related to the reported fault.



STEP 2

Securely wrap your item(s) in protective packaging.



STEP 3

Place your item(s) in a box with sufficient packaging in void space. Place the photocopy of your proof of purchase in the top of box.



STEP 4

Don't forget to keep proof of postage.

PLEASE NOTE THE FOLLOWING:

- If you send the original packaging it may be damaged in transportation and Nintendo cannot replace it.
- Nintendo is not liable for any loss of SD cards or game cartridges that are left inside the console.
- Please ensure that products are securely packaged before shipping to Nintendo as any loss or damage to products that occurs before they arrive with Nintendo is your responsibility and will not be covered by any Nintendo warranty.



OFFICIAL SAUDI DISTRIBUTOR
CUSTOMER SUPPORT

© Nintendo
Nintendo Switch is a trademark of Nintendo